

# ATYPICALLY LOCALIZED GLOMUS TUMORS: REPORT OF 5 CASES

M Uğurlar, MD<sup>1</sup>; F Kabakas, MD<sup>2</sup>; Ö Yapıcı Uğurlar, MD<sup>3</sup>; H Purisa, MD<sup>2</sup>; B Mersa, Ass. Prof.<sup>2</sup>; İB Özçelik, Ass. Prof.<sup>2</sup>

<sup>1</sup>Department of Orthopaedics and Traumatology, Sisli Hamidiye Etfal Training and Research Hospital, İstanbul, Turkey

<sup>2</sup>Hand and Microsurgery, IST-EL Hand Surgery, Microsurgery and Rehabilitation Group, Istanbul, Turkey

<sup>3</sup>Department of Radiology, Okmeydanı Training and Research Hospital, İstanbul, Turkey

## INTRODUCTION

- Glomus tumors are rare benign tumors derived from the neuromyoarterial canal system of the Glomus body
- These tumors are typically located in the subungual region in 75%-90% of the patients
- We present the management of a serie of 5 patients with extra-digital glomus tumors treated surgically

## METHODS

- Retrospective review of 5 patients over the period from June 2007 to August 2013
- Two female and 3 male
- Mean age: 40.6 years
- Mean duration between symptoms onset and presentation: 3.6 years
- The mass was excised with an extended resection including subcutaneous tissue from all the patients (Figure 1, 2)
- Preoperative and postoperative pain assessment comprised subjective evaluation with Visual Analog Scale (VAS)
- Preoperative mean VAS score: 2.4

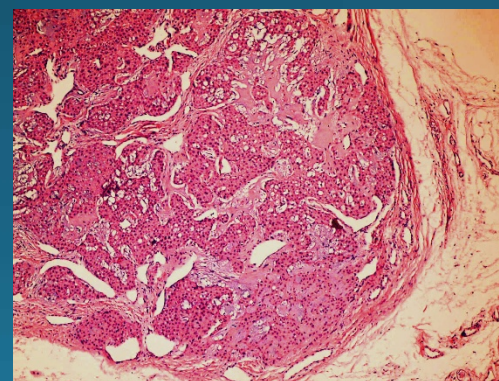
Figure 1



## RESULTS

- Mean follow-up: 52.8 months
- No recurrences were seen during the follow-up period
- Postoperative mean VAS score: 8.2

Figure 2



## CONCLUSION

- When a painfull mass was found in the body, glomus tumors should be kept in mind
- The consideration of symptoms such as pain, temperature sensitivity, point tenderness, and discoloration which are the characterization of glomus tumors will help us in diagnosis

	Case 1	Case 2	Case 3	Case 4	Case 5
Gender	Male	Male	Female	Male	Female
Age (years)	47	41	53	12	50
Localization	Elbow (Posterior of the supracondylar region)	Elbow (Posterior of the lateral condyle)	Thigh (Anterolateral of the thigh)	Knee (Anteromedial of the tuberositas tibia)	Wrist (Dorsal side)
Pain	(+)	(+)	(+)	(+)	(+)
Temperature sensitivity	(+)	(-)	(-)	(+)	(+)
Discoloration	(-)	(-)	(-)	(+)	(-)
Point tenderness	(+)	(+)	(+)	(+)	(+)
Preoperative VAS score	3	2	3	1	3
Postoperative VAS score	9	7	8	8	9

Table 1: The demographic data, physical examination findings, preoperative and postoperative VAS scores