

Scoping Review of DASH Score Reporting for Hand and Wrist Conditions

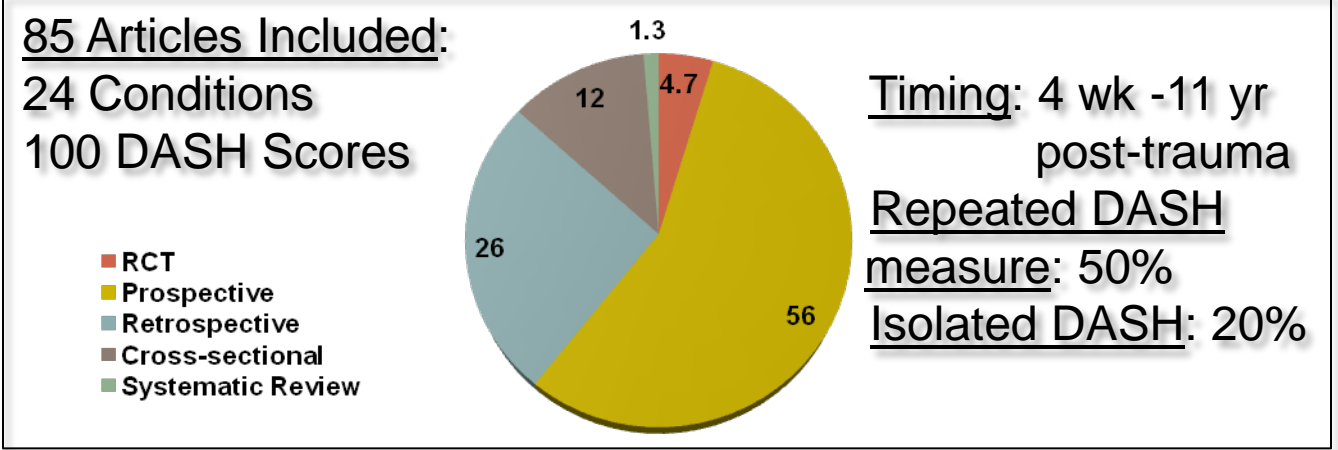
Heather Baltzer MD¹, Christine B. Novak PhD^{1,2}, Steven J. McCabe MD^{1,2}

Division of Plastic & Reconstructive Surgery, University of Toronto¹, Hand & Upper Extremity Program, University of Toronto², Toronto, Ontario

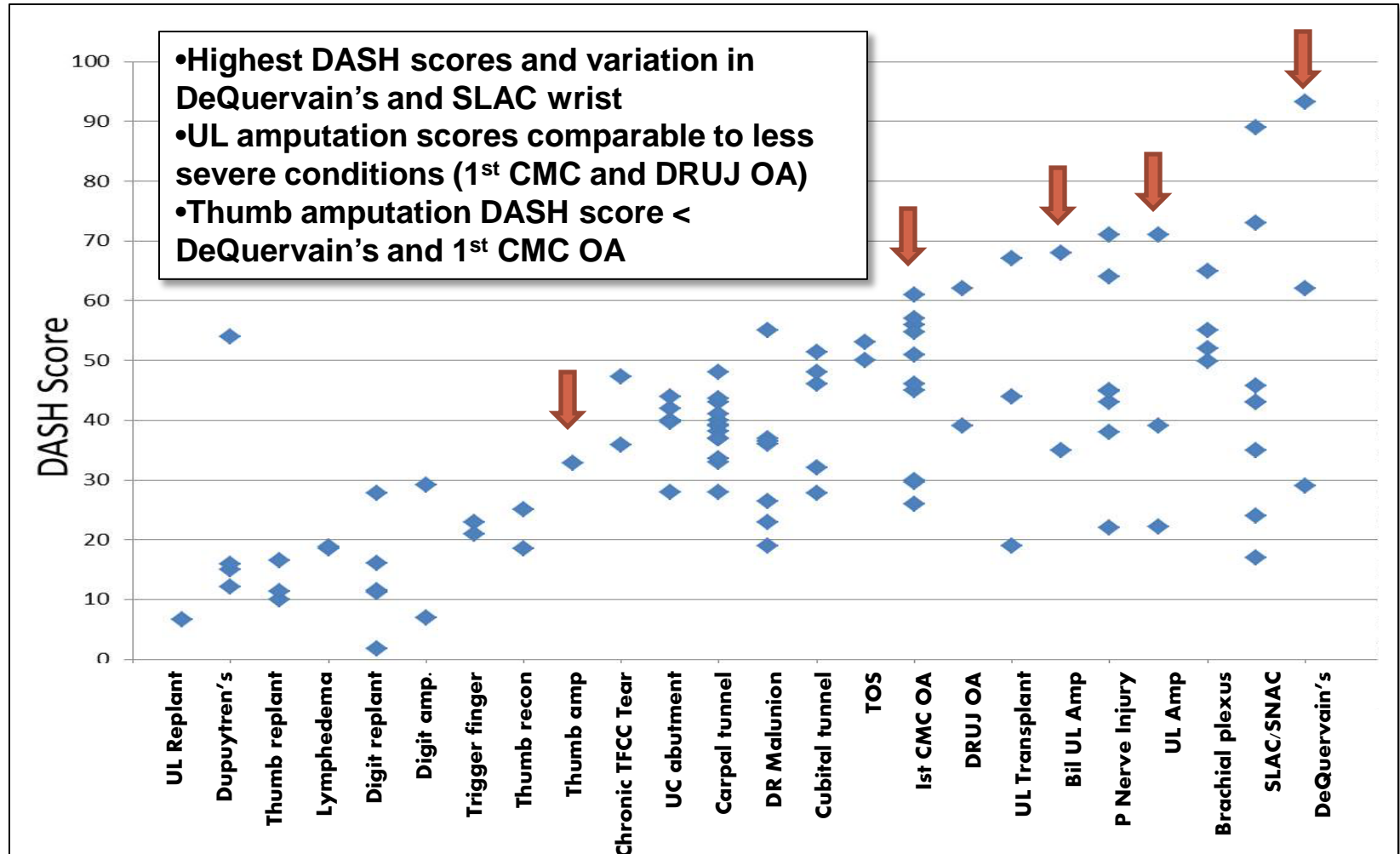
Purpose: The purpose of this literature review was to evaluate the variability of reported baseline DASH scores for non-acute hand and wrist conditions. We hypothesized that DASH scores for evaluation of hand and wrist pathology would provide a map of scores that would correspond to severity.

Methods: A literature search was performed using three databases (MEDLINE, EMBASE, and Cochrane Central Register of Controlled Trials) from the earliest available date through January 1, 2013. Search terms included “DASH” AND “Hand” and combinations of conditions found in the initial search. The search was restricted to studies with: 1) baseline DASH scores; 2) DASH scores for isolated conditions; 3) English language.

Results: How was the DASH being measured?



Results: Reported DASH Scores Mapped by Pathology



Conclusions: In this scoping review, we found: 1) substantial range in disability assessed by the DASH; 2) varied methods and time points of DASH assessment; 3) increased DASH scores did not correspond to the condition severity. This review points to the need for further study of the DASH to allow for interpretation.